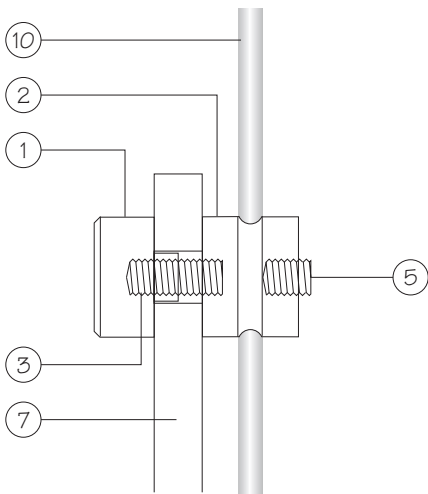
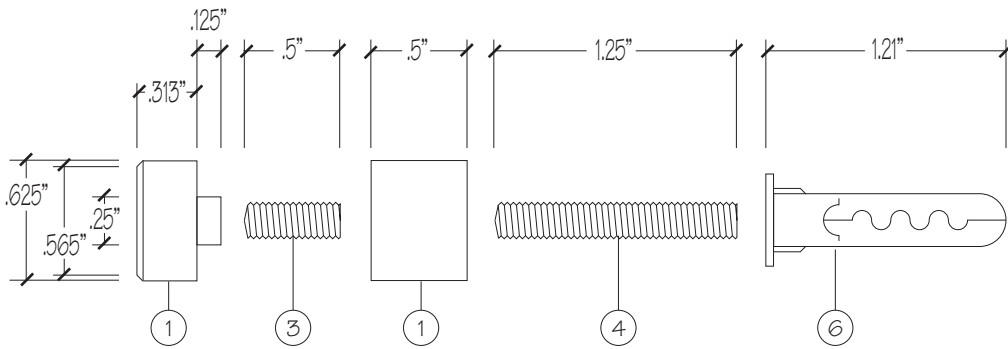


WALL MOUNT

CEILING MOUNT



CABLE/BAR MOUNT

MATERIAL LIST

- ① — 5/8" diameter sign post cap & barrel.
- ② — 5/8" diameter C-barrel.
- ③ — 10/32" x 1/2" cap stud.
- ④ — 10/32" x 1-1/4" installation stud.
- ⑤ — 10/32" x 1/4" cable lock.
- ⑥ — 1/4" plastic wall anchor.
- ⑦ — Sign Panel
- ⑧ — 1/16", 7 x 7 strand type 304 stainless steel wire rope.
- ⑨ — Type 304 stainless steel sleeves.
- ⑩ — 1/8" precision ground stainless steel rod.

The contents of this drawing is confidential and proprietary of SilverLeaf Design, LLC dba Kroy Sign Systems and any reproduction or disclosure of it without the written consent of Kroy Sign Systems is strictly prohibited.

KROY Sign Systems
A SilverLeaf Design LLC Company
7575 E. Redfield Road, Ste. 113
Scottsdale, AZ 85260
800.950.5769

DRAWN BY STEPHEN E. HATCLIFF	
CHECKED BY	
DATE 10/01/12	PART NO. 090164X
SHEET 1 of 1	REVISION 0

COMMENTS
Sign Posts